



PATIO SLIDING SCREEN DOOR HOOD EXTENSION

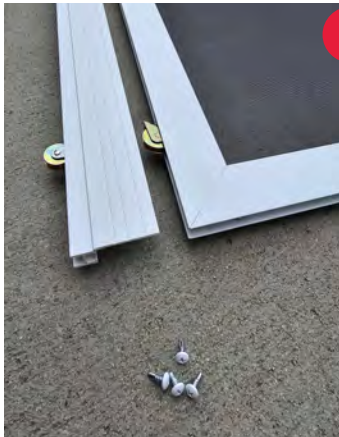
INSTALLATION INSTRUCTIONS

If you need to increase the height of your door, follow these easy steps to install a hood extension onto the top of your door.

IMPORTANT: Extend Bottom Wheels Before Installing Hood Extension

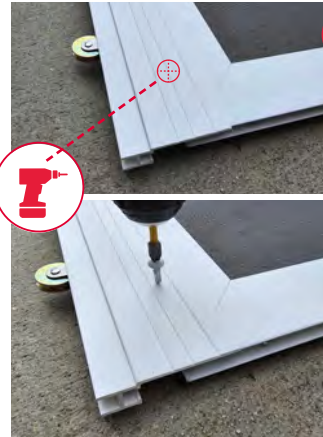


Before you start, refer to the Sliding Screen Door Installation Guide on how to accurately measure your door opening. Also, be sure to raise the bottom wheels by turning the brass screw 1-1 1/2 turns. Do this by inserting a Phillips head screwdriver into the corner and turning clockwise.



1 Gather Supplies

In addition to the hood and the 4 screws included, you will need a measuring tape, drill with a 1/8" drill bit, and Phillips head screwdriver.



2 Mark And Measure

Slide the hood over the top of your door and confirm your measurements. Adjust the hood as needed. On the flat indoor side (side with handle), drill a hole in the middle of the raised edge on the hood.



3 Install And Test Your New Door

With the hood fastened only on the inside, insert your door, hood first, into your opening. Make appropriate adjustments, if necessary.



4 Adjust As Needed

If your door fits well, secure the hood on the outside of the door (side with no handle) by drilling the holes and adding the remaining screws. The hood can be on the thinner door section and can be pinched for maximum height (Fig A). Use a phillips head screwdriver to adjust the bottom wheels until you have the perfect fit!



Visit ScreenTight.com for more information.



One Better Way | Georgetown, SC 29440 | 800.768.7325

ScreenTight.com