



Installing Wrap N' Snap Column Wrap



Step 1 - Handle Column Wrap with care to prevent the joint tape from tearing. Cut Column Wrap to proper height. Apply a bonding adhesive inside each groove. A 1/8" bead along the total length is recommended in the mitered corners. A 1/16" bead is recommended in the snap lock. (Note that an excessive amount of adhesive in the snap lock may result in a sink line in the outside surface.) For optimum results, use an adhesive with moderate setup time.

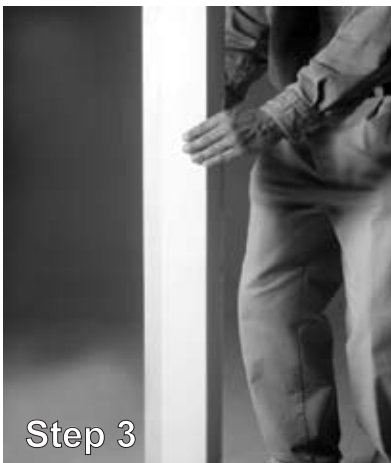
Recommendations for bonding adhesive:

Cellular PVC adhesives perform well. Bond and Fill and Christy's are typical brand names.



Ask your dealer for Wrap N' Snap PVC adhesive, part number WNSA8, available in 8 oz. tubes.

Step 2 - Wrap Column Wrap around the post and "snap" the outside edges together insuring a tight closure along the entire joint.



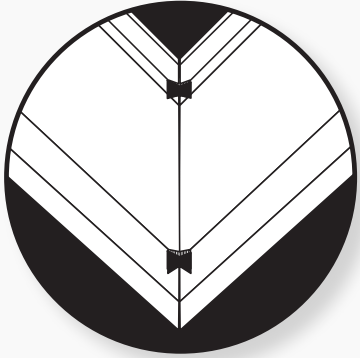
Step 3 - Once the bonding adhesive has set-up - *typically a 24-hour period* - remove the temporary joint tape and your column is complete.

If the temporary tape is not removed after the recommended set-up time, it may be difficult to remove and a residue of adhesive may be left on the Column Wrap surface.

Cleaners such as "Goo-Off" and "Goo-Gone" may be used to remove the adhesive residue. Tape removal when ambient temperatures are less than 50°F may be facilitated with heat from a heat gun applied to the tape during removal.

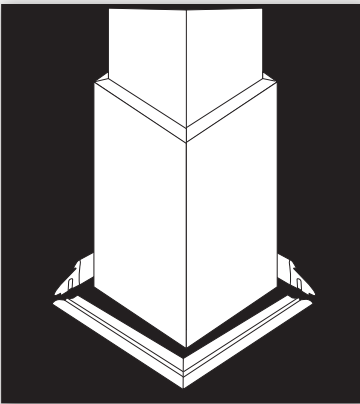


Molding Instructions



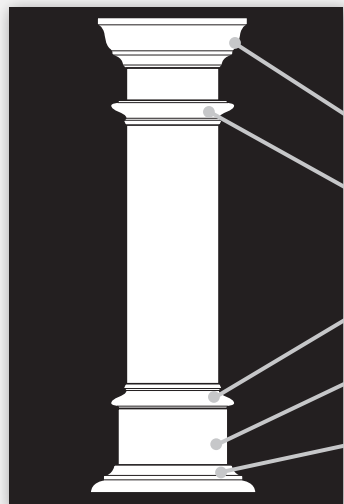
1

All Royal Wood Wrap n Snap moldings are pre mitered with slots cut for dovetail connectors. The dovetail connectors slide easily into the pre-cut slots and securely hold the corners together.



2

To install the molding around the column, join the four corners using a dovetail at each corner with a small amount of PVC adhesive. Attach the molding in the desired location on the column.



3

The Wrap n Snap moldings are available in the Base Molding, the Bead Molding and the Crown Molding. The Bead Molding, XL is long enough to fit around the Wrap n Snap Base / Cap.

Crown Molding

Base Molding

WnS Base/Cap

Bead Molding, XL