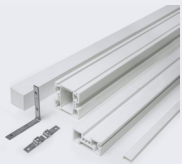




PVC SCREEN WALL SYSTEM INSTALLATION INSTRUCTIONS

TOOLS & SUPPLIES



Components



Hardware



Screen



Power Drill



Flat Spline



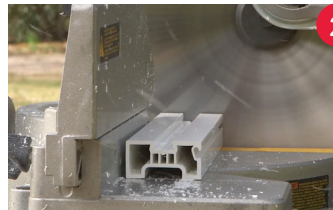
Rollerknife



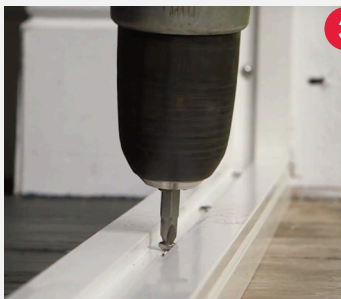
Chop Saw or Hand Saw



- 1** Choose your screen orientation. If you plan on installing your screens from the inside, the track should be facing in. If you'll be working from the outside, the track should be facing out.



- 2** Mark and cut a piece of perimeter to the proper length using a chop saw. Mitering is not necessary. Test fit each length to ensure a snug fit.



- 3** Mount perimeter components to all load-bearing members using 2-inch number six screws. Complete the installation of all perimeter components before optionally installing posts or rails.



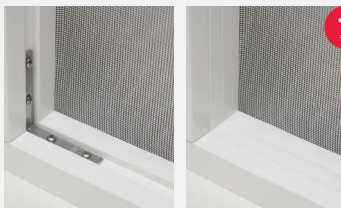
- 4** To insert vertical posts or horizontal rails, measure and use a small piece of post to mark the position. Cut a segment of the post to the proper length and place in the desired position making sure you have a snug fit.



- 5** Fasten Screen Wall post components with the L brackets in each of the corners to hold them securely. Install the brackets by first drilling pilot holes, then fastening with four 3/4-inch number six screws.



- 6** Screen wall uses flat spline to hold screens extra tight. Start at the top left and position the screen over top of the frame. Begin rolling in the spline, with a back and forth motion, pushing it securely into the opening. Trim excess screen with our Rollerknife or a utility blade.



- 7** Screen wall beauty caps insert into the channels to cover the screws and brackets for a clean, seamless look. Simply cut to fit and push into place.



- 8** To install the optional Screen Wall picket components, install picket clips on each end using two, 3/4-inch screws. Then slide into the Screen Wall channels and fasten with two additional 3/4-inch screws.

Installation videos and resources available at [ScreenTight.com/ScreenWall](https://www.screentight.com/ScreenWall)

