



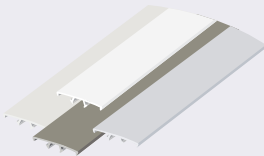
SCREEN TIGHT PORCH SCREENING SYSTEM

INSTALLATION INSTRUCTIONS

TOOLS & SUPPLIES



Screen Tight Base



Screen Tight Cap



Screen



Round Spline



Snips / Shears



Rollerknife



Mallet



Trim & Attach Base

Cut base to fit over wood framing with snips or shears. Base strips are butted together and do not require any mitering or notching. Attach the base strip to wood framing using 1-in wood or sheet rock screws, making sure to put a screw in each slot. Screws should be snug, but not so tight that the base strip bends. Put a screw no more than 2-in from the end of each base strip.



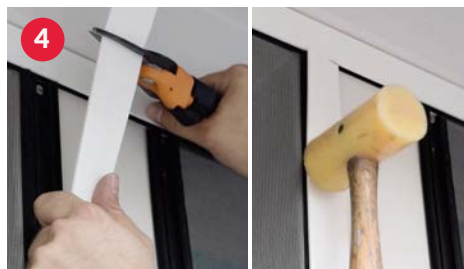
Roll Screen Into Base

Roll screen into base strip with appropriate spline and screening tool. Start by rolling the screen into the top horizontal piece of base. After the top is rolled in, then roll the two sides and then the bottom horizontal piece of base. When screening the bottom, create screen tension by pulling down on the screen slightly to ensure a tight screen.



Trim Excess Screen

Trim all excess screening with a razor knife or a Screen Tight Roller Knife so that excess screen doesn't interfere with the cap snapping onto the base.



Trim & Snap On Cap

Use a rubber mallet to snap the cap into place by starting at one end and working across to the other end.

TIPS & NOTES

- Screen Tight base and cap are available in available 1.5-in or 3.5-in widths.
- When attaching the 3.5-in cap, the inside leg of the cap should be fitted under the base leg before applying pressure.
- To remove Screen Tight cap, start at one end and using a screwdriver gently pry the cap from the base.

Access project videos & support at [ScreenTight.com](https://www.screentight.com)

