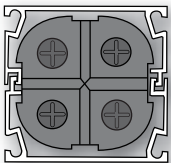


Versatile Aluminum Framing System!

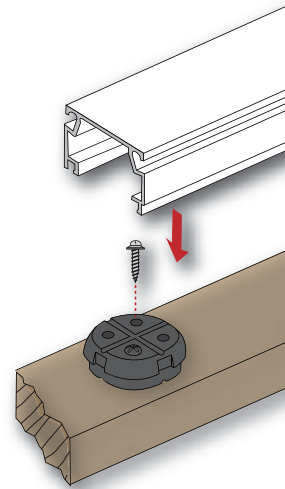


- **NEW... 100% Hidden Fasteners**
- Self-Mating 1" x 2" Channels allow **Unlimited Configurations**
- White or Bronze powder coated extruded aluminum
- **Easy 2 part system** for framing and structural elements
- Screen from interior or exterior of porch quickly

Unlimited screening configurations are possible with Fast Track's innovative 2 piece screening system. These 1" x 2" self-mating channels available in 8', 10' & 12' lengths, create porch structure elements for easy installation and limitless project creativity. This unique aluminum system allows you to screen from the interior or exterior of your porch using flat spline, in less time.



With so many benefits, the solution is simple... Fast Track™



100% Hidden Fasteners for a clean & professional look!

EASY Installation Steps:

1. Attach CLIPS to Porch Frame

Mark clip positions around the frame keeping clips aligned for proper channel installation. Attach clips a maximum of 4" from corners and 14" - 16" apart using #10 x 1 1/2" stainless steel screws. Do not overtighten. (Do not exceed a maximum of 80 square feet per screened in area.)

2. Attach FASTtrack™ CHANNEL to CLIPS

Cut FASTtrack channels to length and snap over clips using a rubber mallet, installing the vertical channels first followed by the horizontal channels.

(NOTE: Install vertical post before installing the horizontals - Refer to Step 3 first)

3. Creating POSTS by "Mating" FASTtrack™ CHANNELS

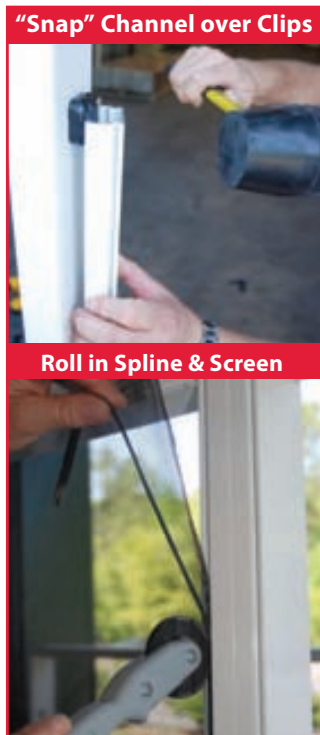
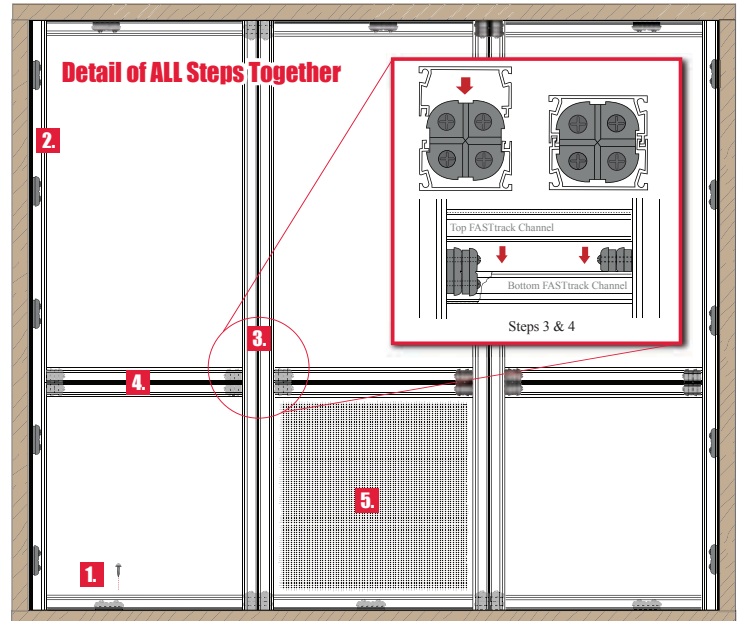
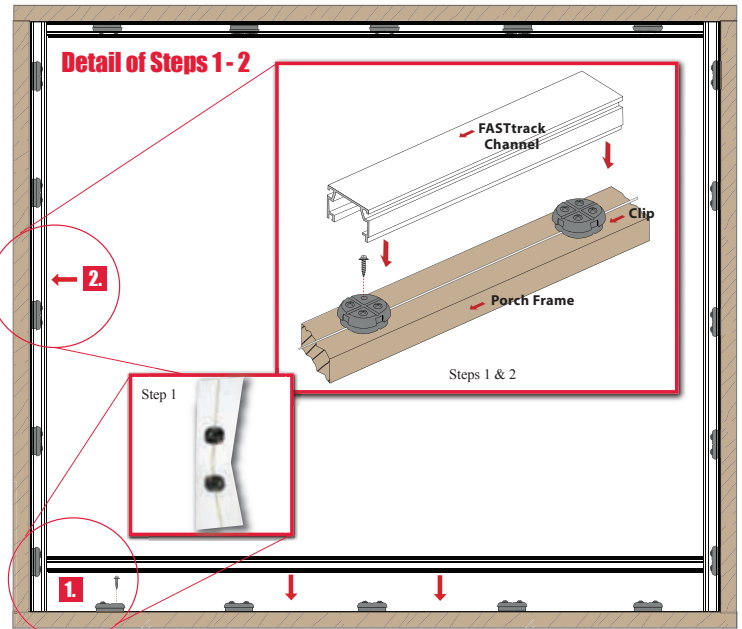
One of the unique features of FASTtrack channels is that the 1"x2" channels snap together to form a 2"x2" post or rail.

Install vertical posts by attaching two clips stacked together in the desired location on both the top and bottom of the frame using #10 x 2" stainless steel screws and then snapping the two FASTtrack channels to the clip using a rubber mallet.

4. Install horizontal posts in a manner similar to step 3 using 3" length screws to attach to the porch frame and #8 x 4 1/2" with nylon nut, zinc plated screws to attach the rails to the vertical posts. (For attaching pickets, refer to the installation instructions included in the FASTtrack railing kit.)

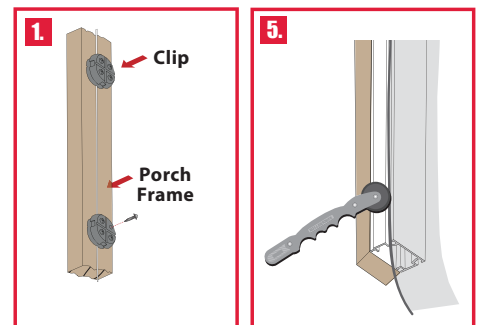
5. Roll SCREEN into FASTtrack™ CHANNEL

Using the flat spline, Pro Rollerknife™ Screening Tool & fiberglass screen; Simply roll screen into the grooves located on either the interior or exterior of the porch. Starting with the top, working your way to the sides and bottom of each section to be screened.



Tools & Other Materials Needed:

- Chop Saw
- Pro Rollerknife™
- Flat Spline
- Screw Driver/Drill
- Rubber Mallet
- Fasteners
- Fiberglass Screen



For more information please visit us on our website www.screentight.com. Thank you.

